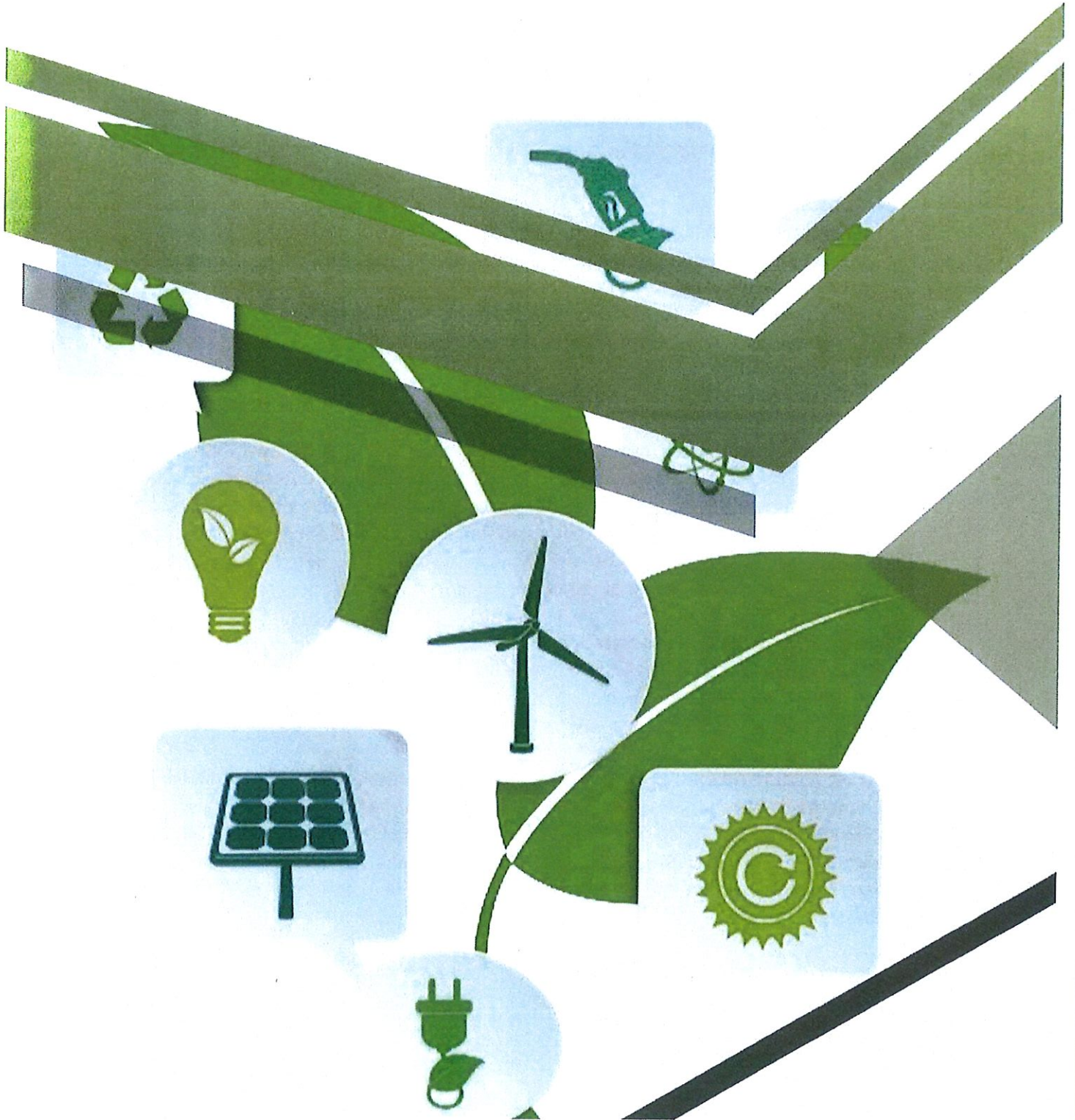


PD Ports Teesport Green Port Policy 2024



Executive Green Port Policy

The Conservancy and HM functions play a crucial role in engaging with various stakeholders within the port ecosystem. These stakeholders include ship and cargo operators as well as Non-Government Organisations (NGOs). The primary aim is to show continued improvements in environmental factors that are under the control of these functions.

- **Green Port Governance:** A dedicated Green Port Sub-Group consisting of Group Technical and Sustainability Director, Harbour Master, Deputy Harbour Master, Sustainability Manager, Sustainability Engineer, Conservancy Operations Manager, and Business Development Analyst has been set up. This team will oversee policy implementation, stakeholder engagement, reporting and monitoring, meeting at least once per quarter.
- **Reduce Shipborne Waste:**
 - **Incentivise recycling:** Offer sustainable solutions to vessels to help aid recycling (e.g. clear plastic bags). We will also work with contractors to improve sustainable solutions.
 - **Minimise landfilling:** Ensure the waste management companies are promoting efficient segregation, recovery, and recycling of waste. This can be done by receiving reports of the waste hierarchy.
 - **Zero Waste:** To achieve a zero-waste system, Statutory Harbour Authority (SHA) may opt for interventions (such as waste to energy or through use of bioremediation) aiming for Zero Waste to Landfill, Zero Incineration, Zero Unauthorised Disposal, Zero Effluent Discharge.
- **Promote responsible water resources:** Water usage for essential ship operations is recognised as necessary and unavoidable. However, PD Ports will promote responsible water management practices by ships and explore opportunities for water reuse and conservation within port operations and to all stakeholders by sharing best practices and informative campaigns. We will also comply with UK regulations and best practices for ships water (use of break tanks) for all berths.
- **Enhance Transparency and Monitoring:**
 - Implement a comprehensive resource lifecycle monitoring system for waste use within the port jurisdiction.
 - Share transparent data on environmental performance with stakeholders.
- **Integrate Climate Adaptation:** Align climate adaptation strategies with existing risk assessments and operational plans, including port marine safety, biosecurity, and infrastructure resilience. The Statutory Harbour Authority (SHA) will adhere to all relevant biosecurity regulations and report any suspected biosecurity incidents to the Department for Environment, Food and Rural Affairs (DEFRA) and other relevant authorities.

- **Develop Air Quality Strategy:**
 - Implement an air quality action plan based on the completed Statutory Harbour Authority Air Emissions Strategy.
 - Reduce port-related emissions through technological advancements, operational improvements, and collaboration with marine operators.
 - Offer knowledge sharing to encourage use of low-emission technologies by ships.
- **Reduce Energy Consumption:**
 - Monitor and record energy consumption per ship movement within the jurisdiction.
 - Encourage stakeholders to use energy-efficient technologies and operational practices. This could be done by using newer more efficient vessels.
 - Invest in port infrastructure upgrades to improve energy efficiency.

Signed

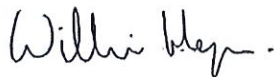


Date

27/6/2024

Duty Holder, Port of Tees and Hartlepool

Signed



Date

27/6/2024

Designated Person, Port of Tees and Hartlepool

Signed



Date

27/6/2024

Harbour Master, Port of Tees and Hartlepool