



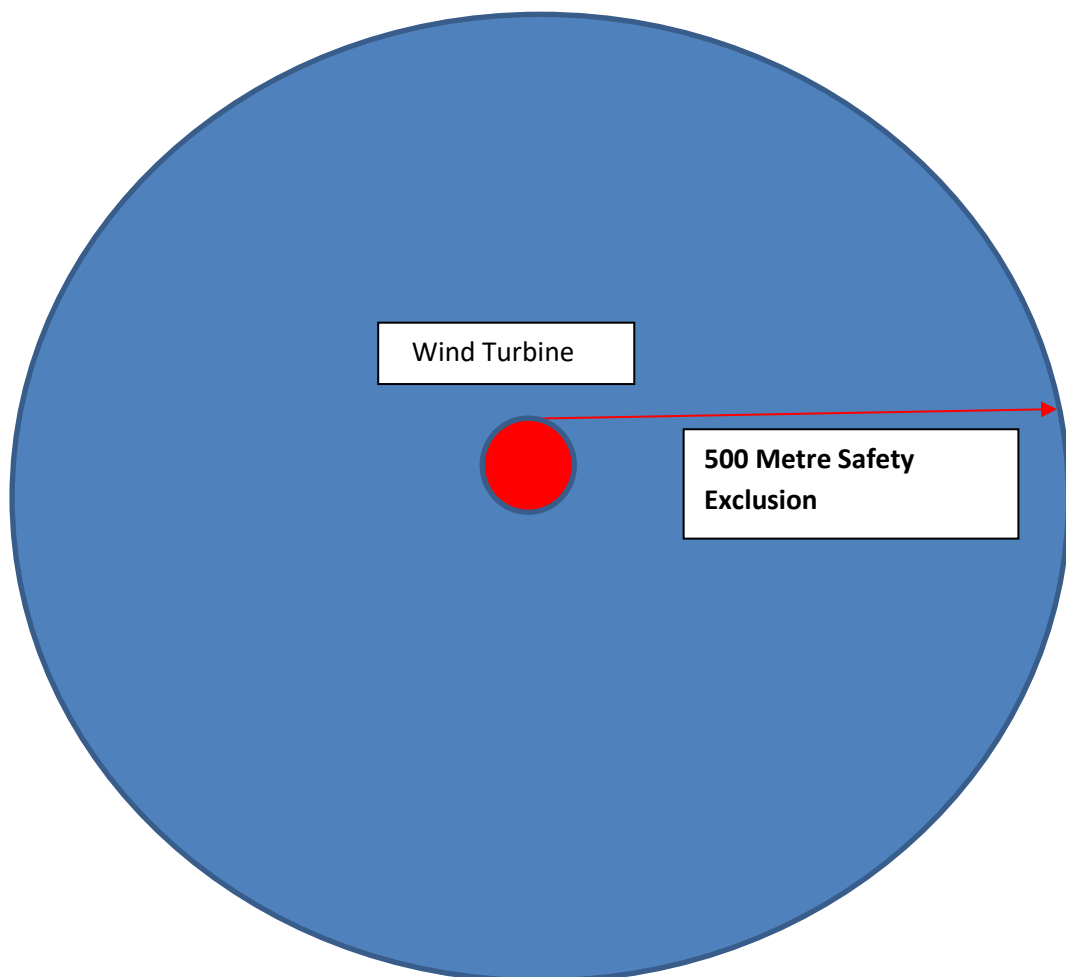
**Notice to Marine Users 2024
Teesside Offshore Windfarm
Important Notice to All Marine Users**

29th September 2024

Planned Maintenance – Sub Sea Inspections and works on wind turbines at Teesside Offshore Wind Farm with Glomar Supporter & ROV on site.

Subsea inspections and works are planned to take place within the boundaries of Teesside Offshore Wind Farm with the assistance of the 'Glomar Supporter' and its associated ROV. The works will involve underwater visual inspections and cleaning of 10 Turbines onsite. Anticipated duration of work is 5 days depending on the weather conditions. We plan for the works to commence on or around the morning of 30th September depending on weather conditions.

For safety reasons there will be a 500m exclusion zone around the radius of turbines and vessel shown below:

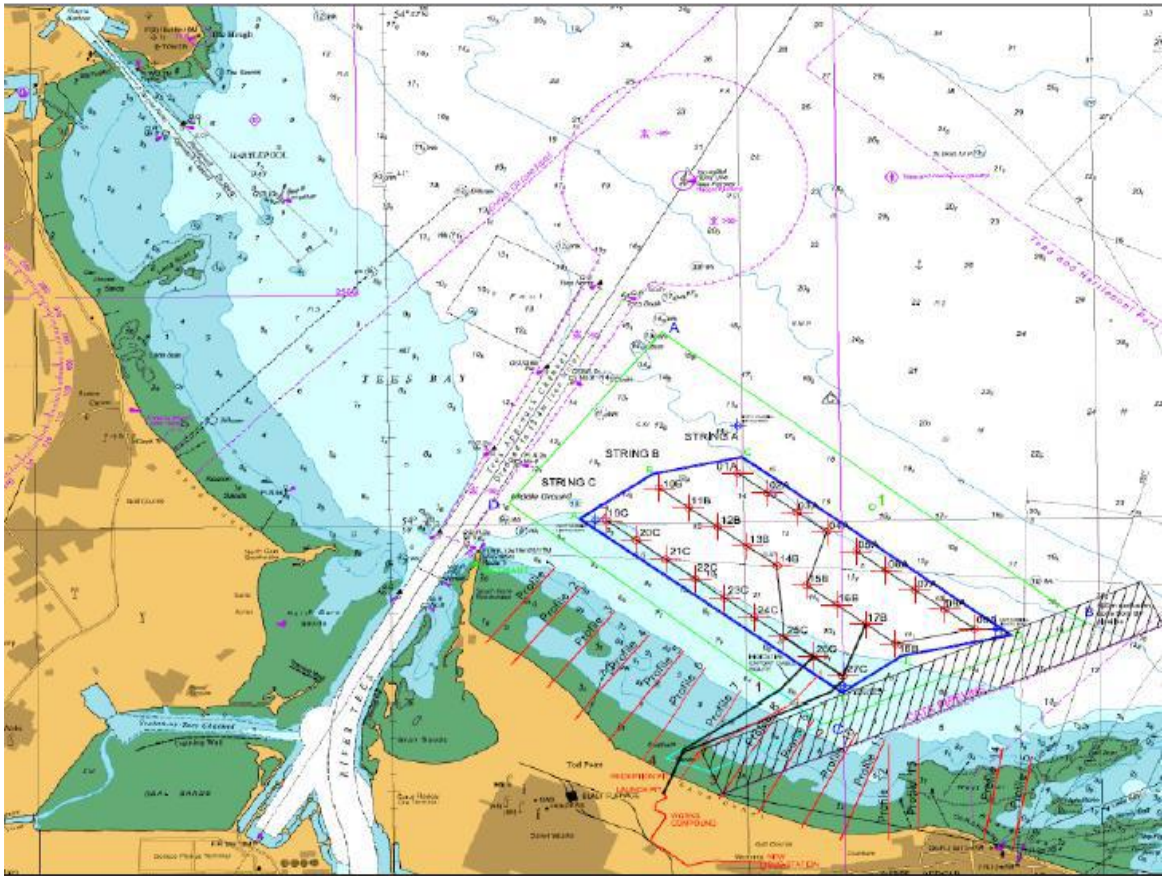


**Notice to Marine Users 2024
Teesside Offshore Wind Farm**

29th September 2024

Turbines are located at the following coordinates:

WindTurbine Generator 01A	54° 39.28'N	001° 06.04'W
WindTurbine Generator 04A	54° 38.94'N	001° 05.30'W
WindTurbine Generator 05A	54° 38.83'N	001° 05.05'W
WindTurbine Generator 06A	54° 38.72'N	001° 04.80'W
WindTurbine Generator 11B	54° 39.08'N	001° 06.46'W
WindTurbine Generator 13B	54° 38.86'N	001°05.97'W
WindTurbine Generator 14B	54° 38.75'N	001°05.72'W
WindTurbine Generator 20C	54° 38.90'N	001°06.91'W
WindTurbine Generator 26C	54° 38.23'N	001°05.43'W
WindTurbine Generator 27C	54° 38.12'N	001°05.18'W



Notice to Marine Users 2024 Teesside Offshore Wind Farm

14th February 2024

Vessel Details:

Vessel Name

Glomar Supporter

Call Sign

SNOF

Scope of Works

Subsea Inspections using ROV
WTG 01A, 04A, 05A, 06A, 11B, 13B,
14B, 20C, 26C, 27C

Duration

5 days (weather permitting)

Operational Parameters

Vessel will be present and
working 24 hours per day. A
500m exclusion zone around the
vessel and turbine is requested
at all times.

