



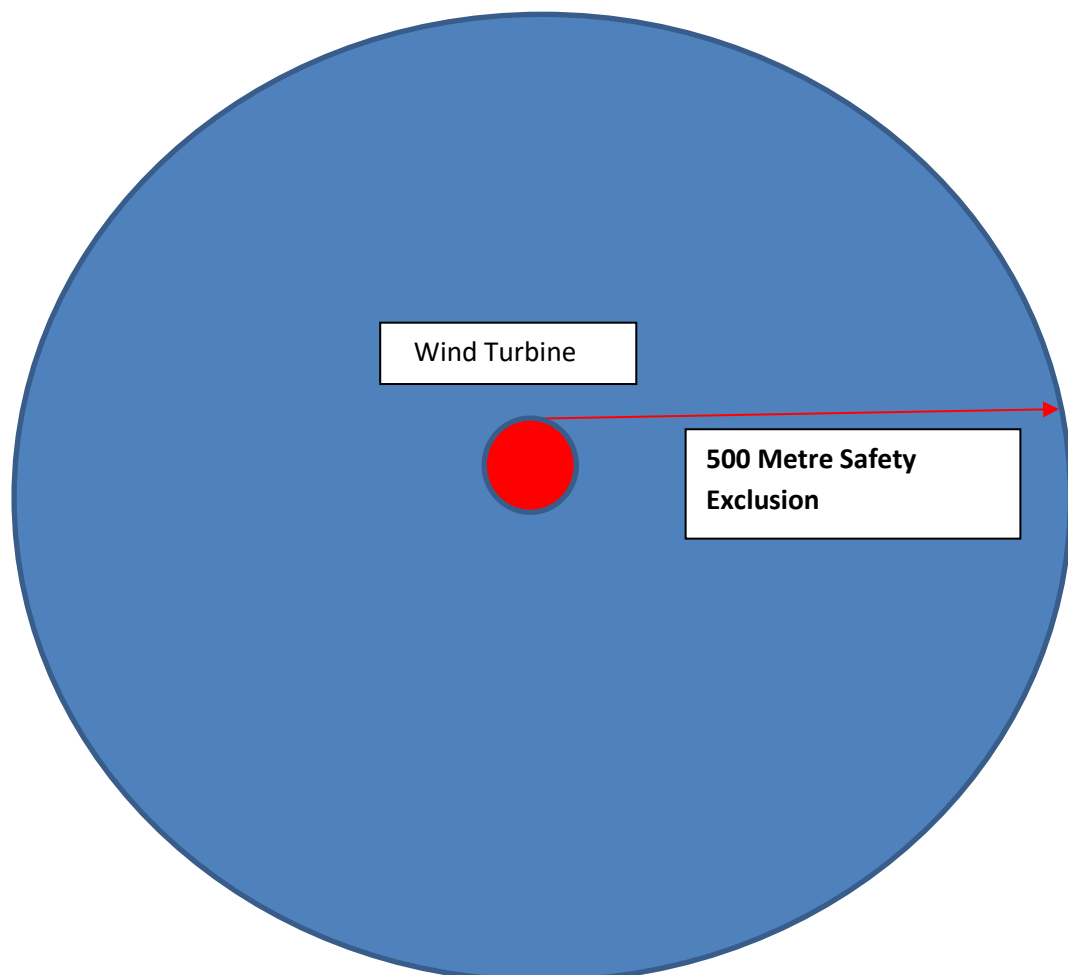
**Notice to Marine Users 2024
Teesside Offshore Windfarm
Important Notice to All Marine Users**

04th December 2024

Planned Maintenance – Sub Sea Inspections and works on wind turbines at Teesside Offshore Wind Farm with Glomar Worker & ROV on site.

Subsea inspections and works are planned to take place within the boundaries of Teesside Offshore Wind Farm with the assistance of the 'Glomar Worker' and its associated ROV. The works will involve underwater visual inspections and cleaning of 10 Turbines onsite. Anticipated duration of work is 5 days depending on the weather conditions. We plan for the works to commence on or around the morning of 04th December depending on weather conditions.

For safety reasons there will be a 500m exclusion zone around the radius of turbines and vessel shown below:

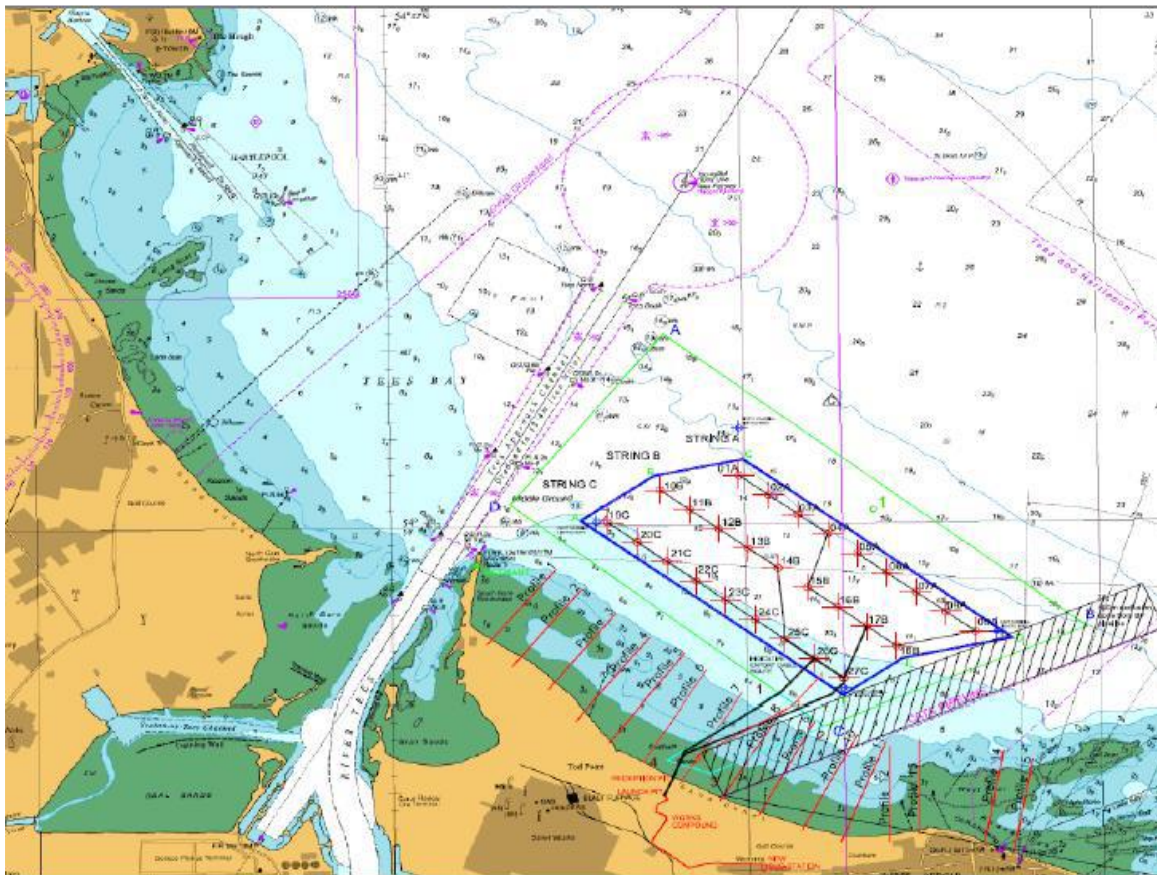


Notice to Marine Users 2024 Teesside Offshore Wind Farm

04th December 2024

Turbines are located at the following coordinates:

WindTurbine Generator 01A	54° 39.28'N	001° 06.04'W
WindTurbine Generator 04A	54° 38.94'N	001° 05.30'W
WindTurbine Generator 05A	54° 38.83'N	001° 05.05'W
WindTurbine Generator 06A	54° 38.72'N	001° 04.80'W
WindTurbine Generator 11B	54° 39.08'N	001° 06.46'W
WindTurbine Generator 13B	54° 38.86'N	001°05.97'W
WindTurbine Generator 14B	54° 38.75'N	001°05.72'W
WindTurbine Generator 20C	54° 38.90'N	001°06.91'W
WindTurbine Generator 26C	54° 38.23'N	001°05.43'W
WindTurbine Generator 27C	54° 38.12'N	001°05.18'W



Notice to Marine Users 2024

04th December 2024

Teesside Offshore Wind Farm

Vessel Details:

Vessel Name	Glomar Worker
Call Sign	3EKK8
Scope of Works	Subsea Inspections using ROV WTG 01A, 04A, 05A, 06A, 11B, 13B, 14B, 20C, 26C, 27C
Duration	5 days (weather permitting)
Operational Parameters	Vessel will be present and working 24 hours per day. A 500m exclusion zone around the vessel and turbine is requested at all times.

