

PD TEESPORT LIMITED

NOTICE TO MARINERS NO.26 OF 2025

Issued by the Harbour Master on 25 February

NORTH-EAST COAST OF ENGLAND

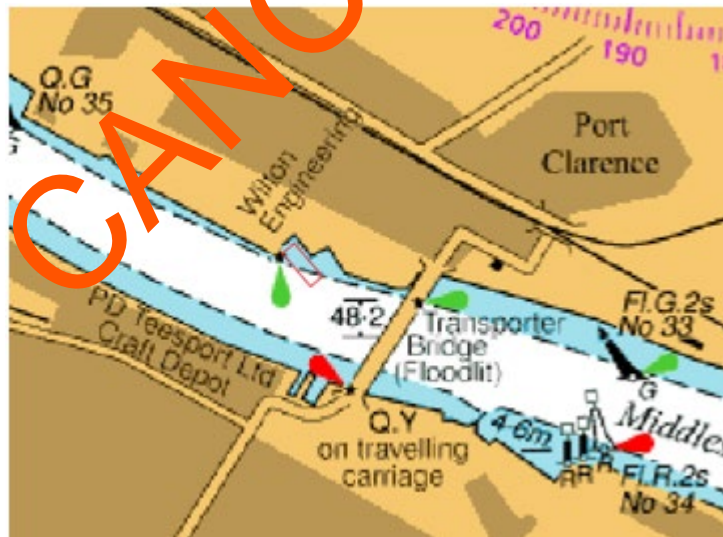
RIVER TEES

PORT CLARENCE INSET BERTH LOAD OUT OPERATIONS

PD Teesport hereby gives notice that the MV "Topaz Pechora" will arrive at Port Clarence Inset Berth on Friday 28 February to undertake load out operations on Saturday 1 March. The vessel is expected to be alongside for up to 36 hours.

Mariners are advised to navigate with caution, as the vessel will protrude into the navigable channel by approximately 25 metres.

Slow passing is requested within the area of operations shown marked in red below and no passing is permitted during the load out period.



Further information is available from TEES VTS on VHF Channel 14 or telephone 01642 277205.

NOTE: Owners, Agents and Charterers should ensure that the contents of this Notice are made known to Masters or persons in charge of their vessels or craft.

Radar, AIS, CCTV, Telephone and VHF Channels are recorded.