

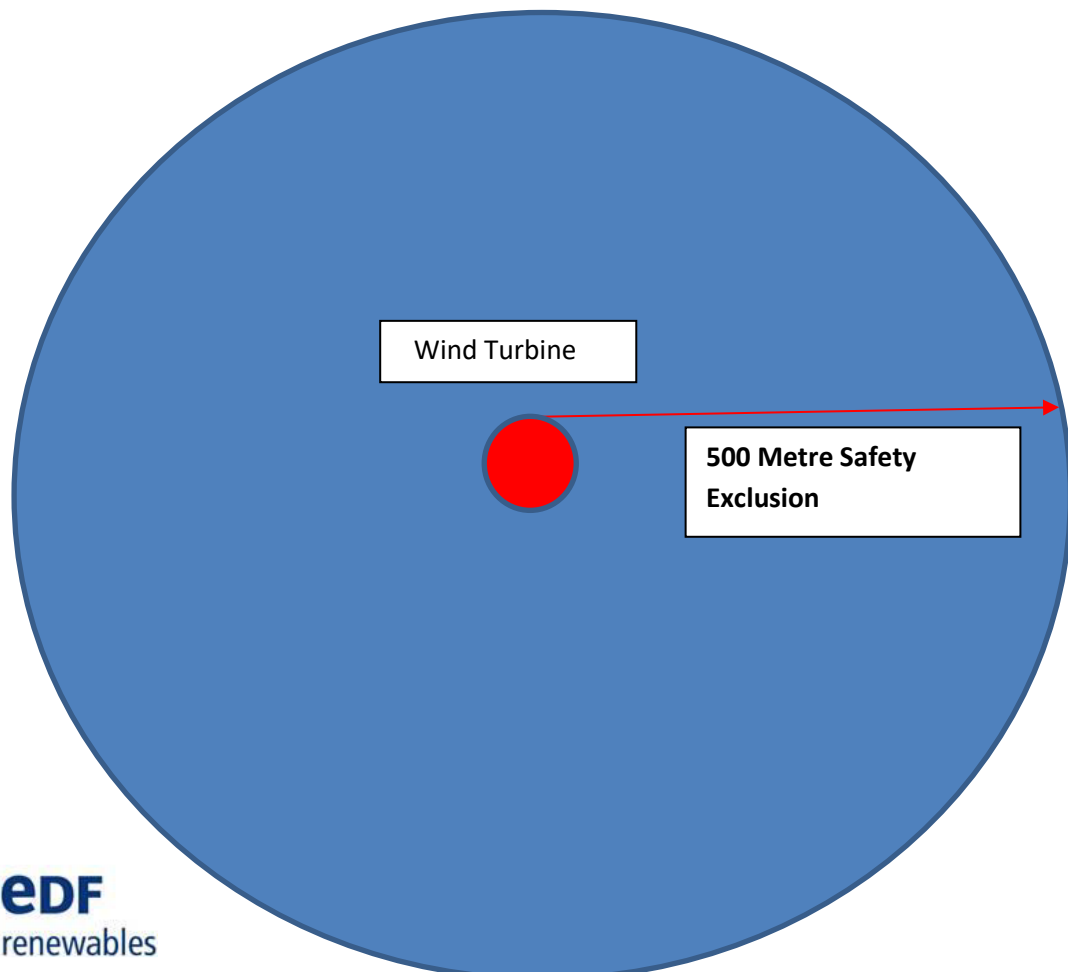
**Notice to Marine Users 2025
Teesside Offshore Windfarm
Important Notice to All Marine Users**

11th March 2025

Planned Maintenance on wind turbines with jack-up vessel-‘WIND’

Maintenance is planned to commence within the boundaries of the Teesside Offshore Wind Farm with the assistance of the ‘Wind’ jack-up vessel. The works will involve exchange of up to 4 existing gearboxes at turbines 03A, 12B, 15B and 24C. Anticipated duration of work for each turbine will take 6 to 8 days depending on the turbine status and weather conditions. **We plan for the works to commence on or around the 16th March depending on weather conditions.**

For safety reasons there will be a 500m exclusion zone around the radius of turbines and vessel shown below:

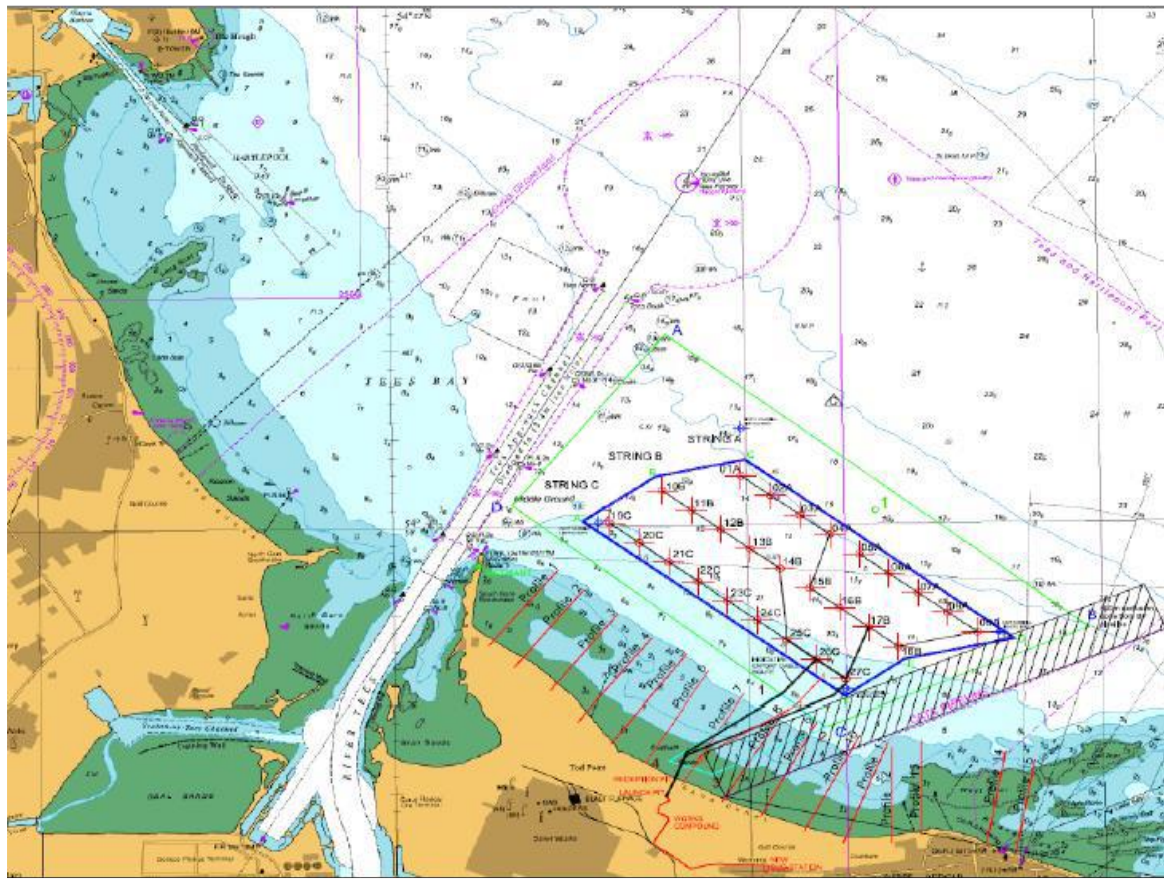


Notice to Marine Users 2025 Teesside Offshore Wind Farm

11th March 2025

Turbines are located at the following coordinates:

Wind Turbine Generator 3A	54° 39.05'	001° 05.55'
Wind Turbine Generator 12B	54° 38.97'	001° 06.22'
Wind Turbine Generator 15B	54° 38.64'	001° 05.47'
Wind Turbine Generator 24C	54° 38.46'	001° 05.92'

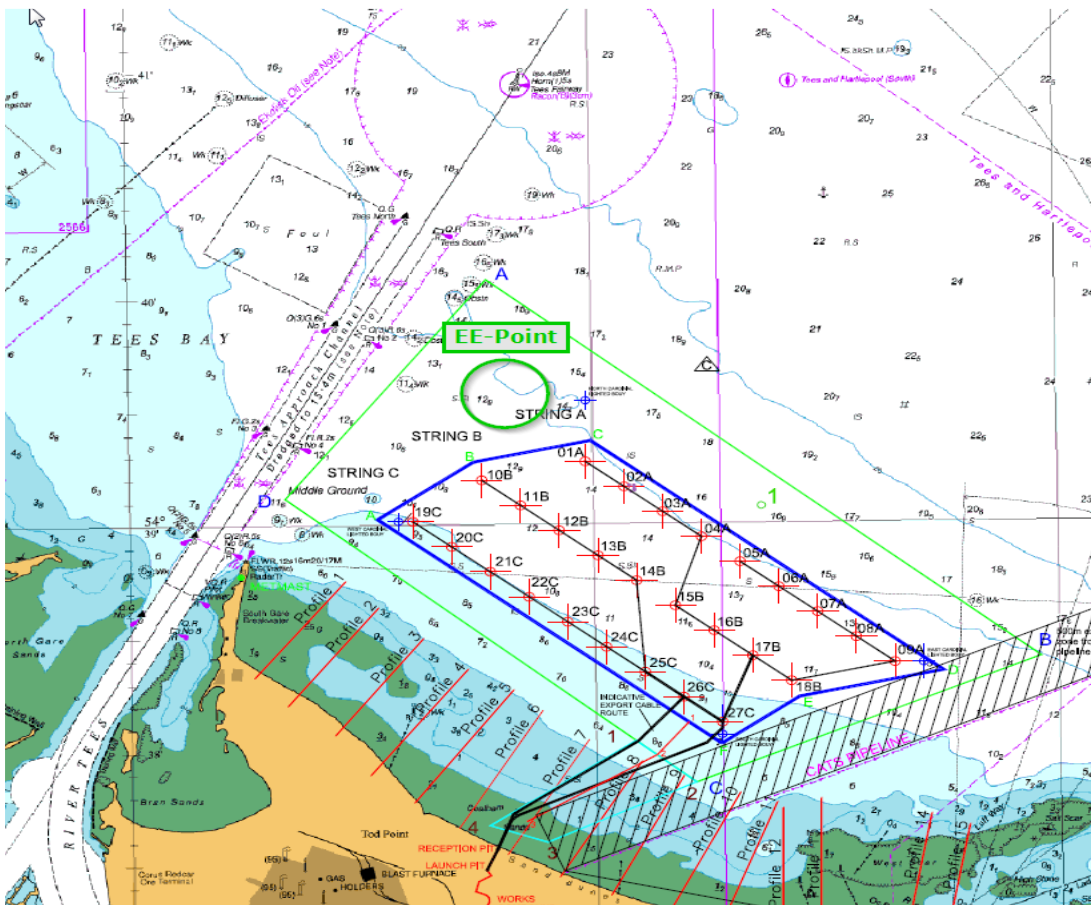


Notice to Marine Users 2025 Teesside Offshore Wind Farm

11th March 2025

The vessel will make use of the designated entry/egress point as shown, marked with the green circle. As the project progresses this plan might change, and marine users will be updated accordingly.

The adverse weather and standby position are the same as the entry/egress point. This is a floating standby position to be used if criteria are not met for positioning or jacking.



Notice to Marine Users 2025 Teesside Offshore Wind Farm

11th March 2025

Vessel Details:

Vessel Name Wind
Call Sign OXSW2

Scope of Works Jack-up and bridge to turbines
03A, 12B, 15B, 24C

Duration 6 to 8 days per turbine (weather permitting)

Operational Parameters Vessel will be present 24 hours per day and working time will be 12 hours per day. A 500m exclusion zone around the vessel and turbine is requested at all times.

